

Station IV - Hollerich

Project Details

Activities
Buildings
Residential
International

Location
Hollerich Luxembourg
Luxembourg LU

Client
Schuler Immo

Price
€1.600.000

Architects
SNCD Architecture

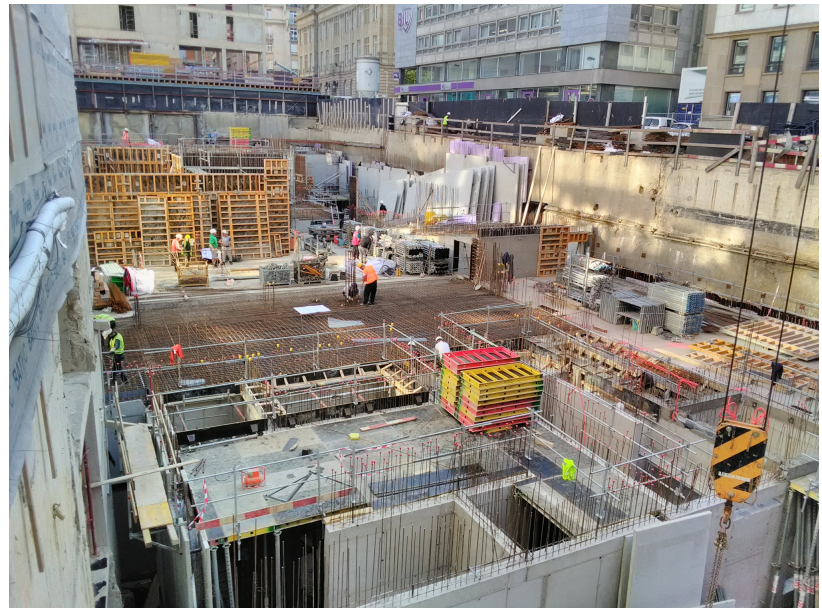
Engineering Office
Plan B

Surface area above ground
2 000m²

Construction period
1 year 1 month

Start work
11-2017

End of work
12-2018



Construction of a residential building.