

Lidl - Sint-Niklaas

Project Details

Activities

Buildings
Industrial & logistics

Contractors

Cosimco

location

Europark Zuid 6E
9100 Sint-Niklaas Belgium
Oost-Vlaanderen BE

Client

Sint-Niklaas Logistics (Lidl)

Architects

Architeam

Engineering Office

LingK

Surface area above ground

9 679m²

Construction period

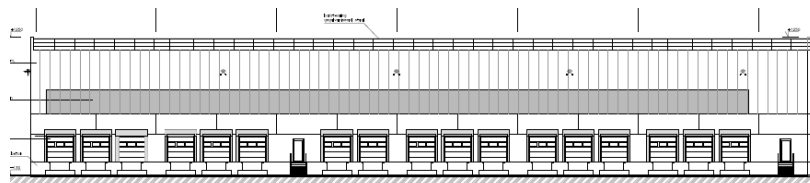
10 months

Start work

10-2016

End of work

08-2017



Extension of a turn key distribution center with including infrastructure for Lidl in Sint-Niklaas

The extension exist of :

- 9.679 m²
- 13.500 m² environment works
- 2.350 m² green areas.

Cosimco



Kartuizersweg 1
2550 Kontich (Belgium)
tel +32 3 450 77 00
info@cosimco.be
www.cosimco.be

Since 2005, Cosimco has been part of Willemen Groep, the largest family construction group in Belgium.