

**Willemen Groep**  
Boerenkrijgstraat 133, BE - 2800 Mechelen  
tel +32 15 569 965, groep@willemen.be

## Antwerpen-Zuid Station - Antwerp

### Project Details

**Activities**  
Civil Engineering  
Railway infrastructure & stations

**Contractors**  
Willemen Construct

**location**  
Kolonel Silvertopstraat  
2020 Antwerpen Belgium  
Antwerpen BE

**Client**  
NMBS

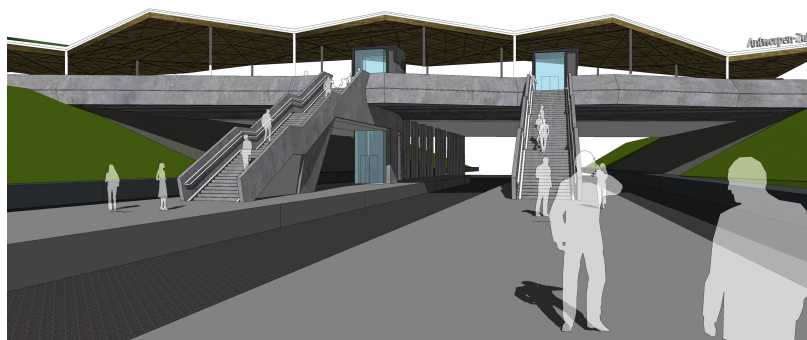
**Architects**  
NMBS

**Engineering Office**  
NMBS

**Construction period**  
2 years 7 months

**Start work**  
11-2022

**End of work**  
06-2025



The existing accesses (concrete stairs and escalators) to the platforms in Antwerp South station will be demolished and replaced by a bicycle lift and precast concrete stairs.

We are also building a new bridge with on-site poured abutments, piers and lift shafts topped by precast concrete girders. Once completed, the annexed bridge will serve as a covered bicycle shed.

A special feature of the project is the train environment, which will involve a lot of phasing and weekend work

### Willemen Construct



Boerenkrijgstraat 133  
2800 Mechelen, Antwerpen  
(Belgium)  
tel +32 15 56 99 65  
bouw@willemen.be  
[www.willemen.be](http://www.willemen.be)

Willemen Construct came into being on 1 July 2018 as a result of the merger between Willemen General Contractor and the construction department of Kumpen.