

Antwerpen-Zuid Station - Antwerp

Project Details

Activities
Civil Engineering
Railway infrastructure & stations

Contractors
Franki Construct

location
Kolonel Silvertopstraat
2020 Antwerpen Belgium
Antwerpen BE

Client
NMBS

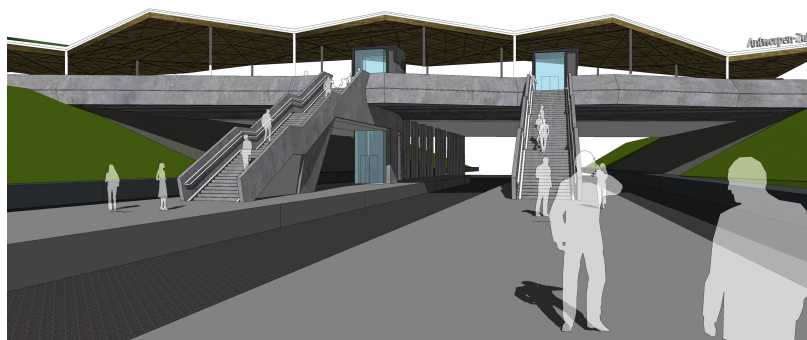
Architects
NMBS

Engineering Office
NMBS

Construction period
2 years 7 months

Start work
11-2022

End of work
06-2025



The existing accesses (concrete stairs and escalators) to the platforms in Antwerp South station will be demolished and replaced by a bicycle lift and precast concrete stairs.

We are also building a new bridge with on-site poured abutments, piers and lift shafts topped by precast concrete girders. Once completed, the annexed bridge will serve as a covered bicycle shed.

A special feature of the project is the train environment, which will involve a lot of phasing and weekend work

Franki Construct



Kartuizersweg 1
2550 Kontich (Belgium)
tel +32 3 821 16 80
FCVINFO@franki.be
www.franki.be

Since 1998 Franki Construct has been part of Willemen Groep, the largest family construction group in Belgium.