

## Antwerpen-Zuid Station - Antwerp

### Project Details

#### Activities

Civil Engineering  
Railway infrastructure & stations

#### Contractors

Franki Construct

#### Location

Kolonel Silvertopstraat  
2020 Antwerpen Belgium  
Antwerpen BE

#### Client

NMBS

#### Architects

NMBS

#### Engineering Office

NMBS

#### Construction period

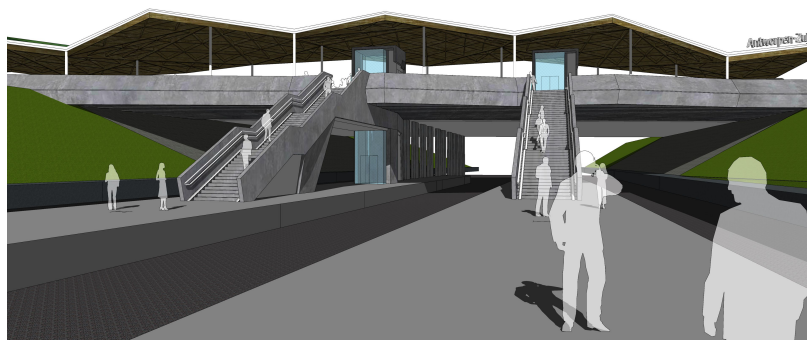
2 years 7 months

#### Start work

11-2022

#### End of work

06-2025



The existing accesses (concrete stairs and escalators) to the platforms in Antwerp South station will be demolished and replaced by a bicycle lift and precast concrete stairs.

We are also building a new bridge with on-site poured abutments, piers and lift shafts topped by precast concrete girders. Once completed, the annexed bridge will serve as a covered bicycle shed.

A special feature of the project is the train environment, which will involve a lot of phasing and weekend work

### Franki Construct



Kartuizersweg 1  
2550 Kontich (Belgium)  
tel +32 3 821 16 80  
FCVINFO@franki.be  
[www.franki.be](http://www.franki.be)

Since 1998 Franki Construct has been part of Willemen Groep, the largest family construction group in Belgium.