

Marly bus depot - Neder-Over-Heembeek

Project Details

Activities

Buildings
Industrial & logistics
Civil Engineering
Railway infrastructure & stations

Contractors

Cosimco
Franki Construct

location

De Tyraslaan 90-100
1120 Neder-Over-Heembeek
Belgium
Brussels BE

Client

MIVB

Architects

Altiplan
Arcadis

Temporary partnership

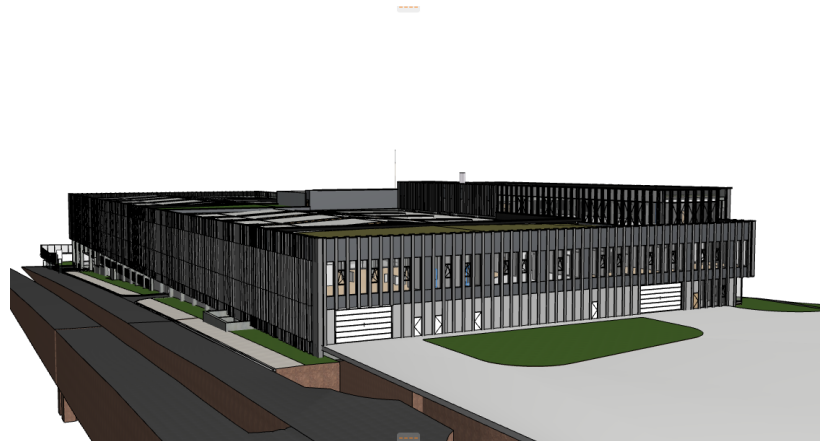
Franki CONstruct, Cosimco

Engineering Office

Tractebel Engineering

Start work

04-2023



Franki Construct and Cosimco are jointly building a new depot for MIVB/STIB to accommodate 190 hybrid buses. The main building will be 190m long, 70m wide and 20m high, with one basement level and three above-ground levels. All building services (electricity, data, plumbing, HVAC, etc.) are in our remit.

The new building combines several functions:

- maintenance workshop including special garage techniques
- offices
- social functions for the drivers (changing rooms, toilets, showers and a dining room).

Cosimco



Kartuizersweg 1
2550 Kontich (Belgium)
tel +32 3 450 77 00
info@cosimco.be
www.cosimco.be

Since 2005, Cosimco has been part of Willemen Groep, the largest family construction group in Belgium.

Franki Construct



Kartuizersweg 1
2550 Kontich (Belgium)
tel +32 3 821 16 80
FCVINFO@franki.be
www.franki.be

Since 1998 Franki Construct has been part of Willemen Groep,
the largest family construction group in Belgium.