

## Marly bus depot - Neder-Over-Heembeek

### Project Details

#### Activities

Buildings  
Industrial & logistics  
Civil Engineering  
Railway infrastructure & stations

#### Contractors

Cosimco  
Franki Construct

#### location

De Tyraslaan 90-100  
1120 Neder-Over-Heembeek  
Belgium  
Brussels BE

#### Client

MIVB

#### Architects

Altiplan  
Arcadis

#### Temporary partnership

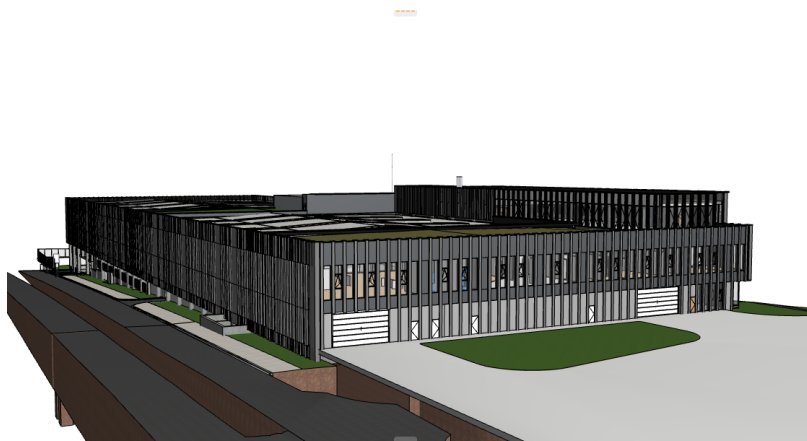
Franki Construct, Cosimco

#### Engineering Office

Tractebel Engineering

#### Start work

04-2023



Franki Construct and Cosimco are jointly building a new depot for MIVB/STIB to accommodate 190 hybrid buses. The main building will be 190m long, 70m wide and 20m high, with one basement level and three above-ground levels. All building services (electricity, data, plumbing, HVAC, etc.) are in our remit.

The new building combines several functions:

- maintenance workshop including special garage techniques
- offices
- social functions for the drivers (changing rooms, toilets, showers and a dining room).

#### Cosimco



Kartuizersweg 1  
2550 Kontich (Belgium)  
tel +32 3 450 77 00  
info@cosimco.be  
[www.cosimco.be](http://www.cosimco.be)

Since 2005, Cosimco has been part of Willemen Groep, the largest family construction group in Belgium.

#### Franki Construct



Kartuizersweg 1  
2550 Kontich (Belgium)  
tel +32 3 821 16 80  
FCVINFO@franki.be  
[www.franki.be](http://www.franki.be)

Since 1998 Franki Construct has been part of Willemen Groep,  
the largest family construction group in Belgium.