

**Willemen Groep**

Boerenkrijgstraat 133, BE - 2800 Mechelen  
tel +32 15 569 965, groep@willemen.be

## Renoir - Evere

### Project Details

**Activities**

Buildings  
Social housing

**Contractors**

Franki  
Willemen Construct

**location**

RUe Auguste Renoirstraat  
1140 Evere Belgium  
Brussels BE

**Client**

SLRB-BGHM

**End User**

Everecity

**Architects**

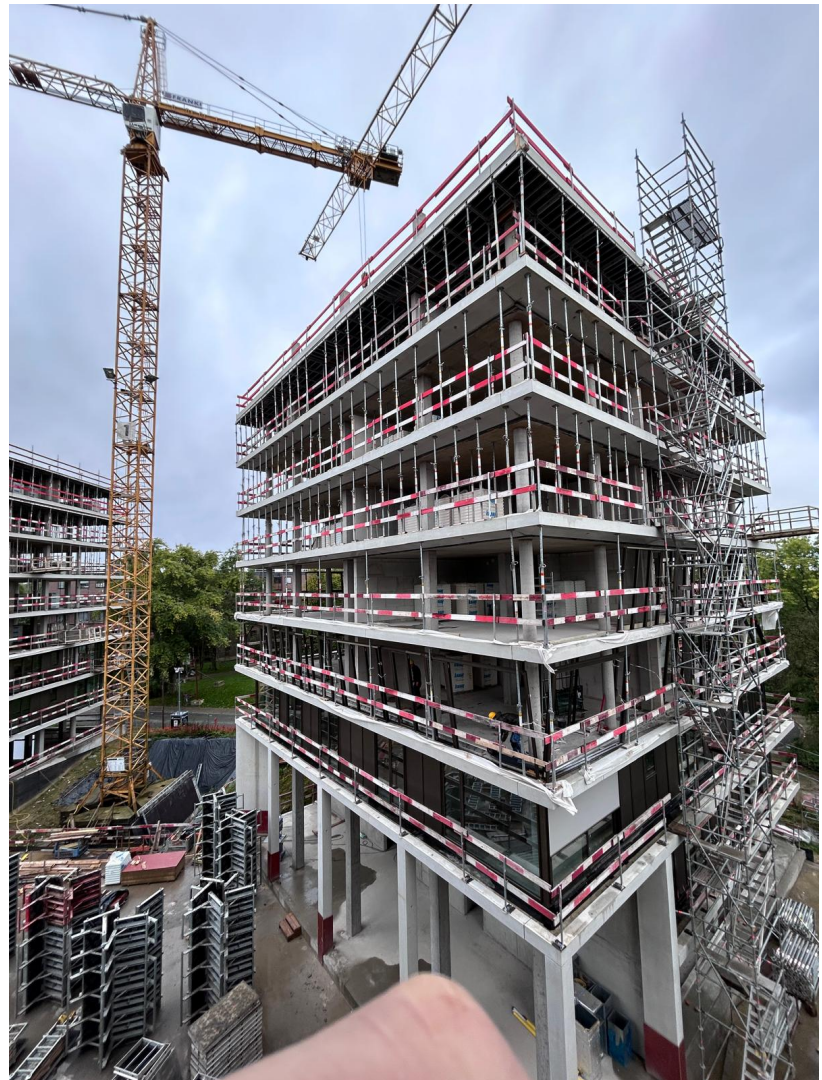
MDW Architecture

**Engineering Office**

Tractebel

**Start work**

04-2023



This project was designed by MDW Architecture and will be managed by Everecity. 160 families will come to live here in 96 social housing units and 64 middle-class houses, spread over six buildings arranged around two pedestrian plazas. A multi-purpose hall for the neighbourhood is also planned, as well as several collective spaces that will provide life at the foot of the buildings (laundry, repair workshops, botanical greenhouses, etc.). Underground, this project provides 106 car parking spaces and no fewer than 438 bicycle parking spaces.

The project not only provides an answer to the demand for social

housing, but also pursues several objectives, starting with optimal integration into the Germinal neighbourhood and the creation of ties among residents through these numerous collective facilities.

An important focus is also the ecological aspect. Situated in an area particularly rich in biodiversity, the project was designed to preserve the landscape qualities as much as possible. The soil surface is as permeable as possible, while soft mobility is encouraged. Existing urban agricultural areas are perpetuated as instruments of social cohesion.

### Franki



Chemin des moissons, 10  
4400 Flémalle, Liege (Belgium)  
tel +32 4 2505150 | +32 4  
3493939  
info@franki.be  
[www.franki.be](http://www.franki.be)

Since 1998 Franki has been part of Willemen Groep, the largest family construction group in Belgium.

### Willemen Construct



Boerenkrijgstraat 133  
2800 Mechelen, Antwerpen  
(Belgium)  
tel +32 15 56 99 65  
bouw@willemen.be  
[www.willemen.be](http://www.willemen.be)

Willemen Construct came into being on 1 July 2018 as a result of the merger between Willemen General Contractor and the construction department of Kumpen.