

## Lidl - Sint-Niklaas

### Project Details

#### Activities

Buildings  
Industrial & logistics

#### Contractors

Cosimco

#### location

Europark Zuid 6E  
9100 Sint-Niklaas Belgium  
Oost-Vlaanderen BE

#### Client

Sint-Niklaas Logistics (Lidl)

#### Architects

Architeam

#### Engineering Office

LingK

#### Surface area above ground

9 679m<sup>2</sup>

#### Construction period

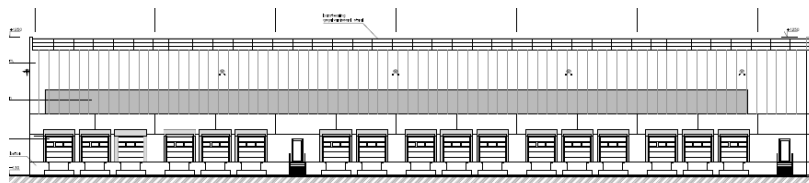
10 months

#### Start work

10-2016

#### End of work

08-2017



Extension of a turn key distribution center with including infrastructure for Lidl in Sint-Niklaas

The extension exist of :

- 9.679 m<sup>2</sup>
- 13.500 m<sup>2</sup> environment works
- 2.350 m<sup>2</sup> green areas.

### Cosimco



Kartuizersweg 1  
2550 Kontich (Belgium)  
tel +32 3 450 77 00  
info@cosimco.be  
[www.cosimco.be](http://www.cosimco.be)

Since 2005, Cosimco has been part of Willemen Groep, the largest family construction group in Belgium.